

# Wesley Mirror

---

## ASSEMBLY INSTRUCTIONS

# JOON LOLOI

## ASSEMBLY INSTRUCTIONS

Read these instructions carefully and keep for future reference. Refer to parts inventory for guidance, and ensure you have all pieces before starting. When assembling, place all parts on a soft, clean, and flat surface such as a carpet to prevent scratches.

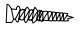


PARTS INVENTORY		
ID	DESCRIPTION	QTY
<b>1</b>	MIRROR	1

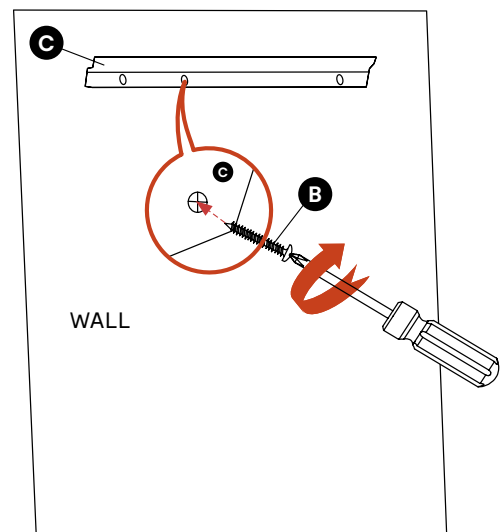
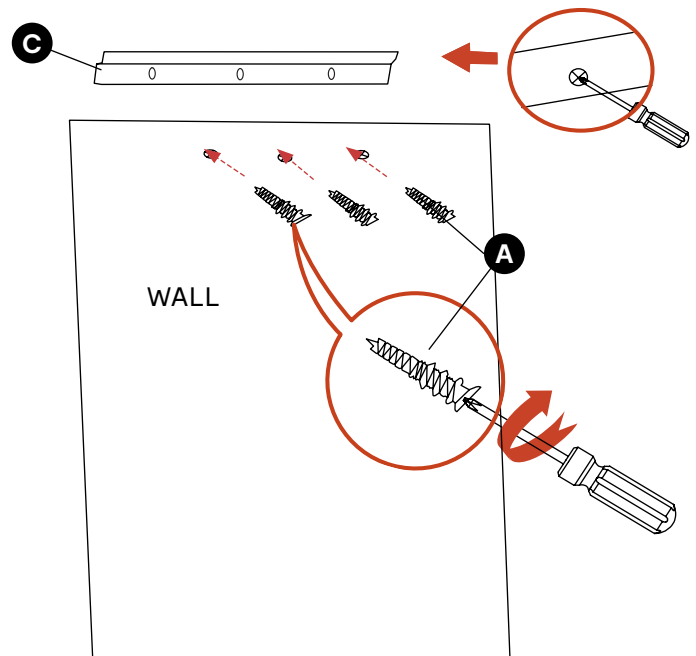
### STEP 1

Determine the type of wall you'll be hanging the mirror on (a stud finder could be needed), after insuring the **CLEAT (C)** is level, mark the location of the **CLEAT (C)** holes on the wall. Insert **ANCHORS (A)** if no stud is available in desired wall location and you are hanging onto drywall. Tighten **ANCHORS (A)** into wall with screwdriver or drill (not included) if needed.

### STEP 2

Place the **CLEAT (C)** on the wall matching the holes you marked and created in step one, or matching the the holes over the **ANCHORS (A)** that are in the wall. Then insert **SCREWS (B)** through the **CLEAT (C)** holes and into the holes in the wall or into the **ANCHORS (A)** in the wall. Tighten with a phillips head screwdriver.

HARDWARE INVENTORY			
ID	IMAGE	DESCRIPTION	QTY
<b>A</b>		ANCHORS	3
<b>B</b>		SCREWS	3
<b>C</b>		CLEAT	1

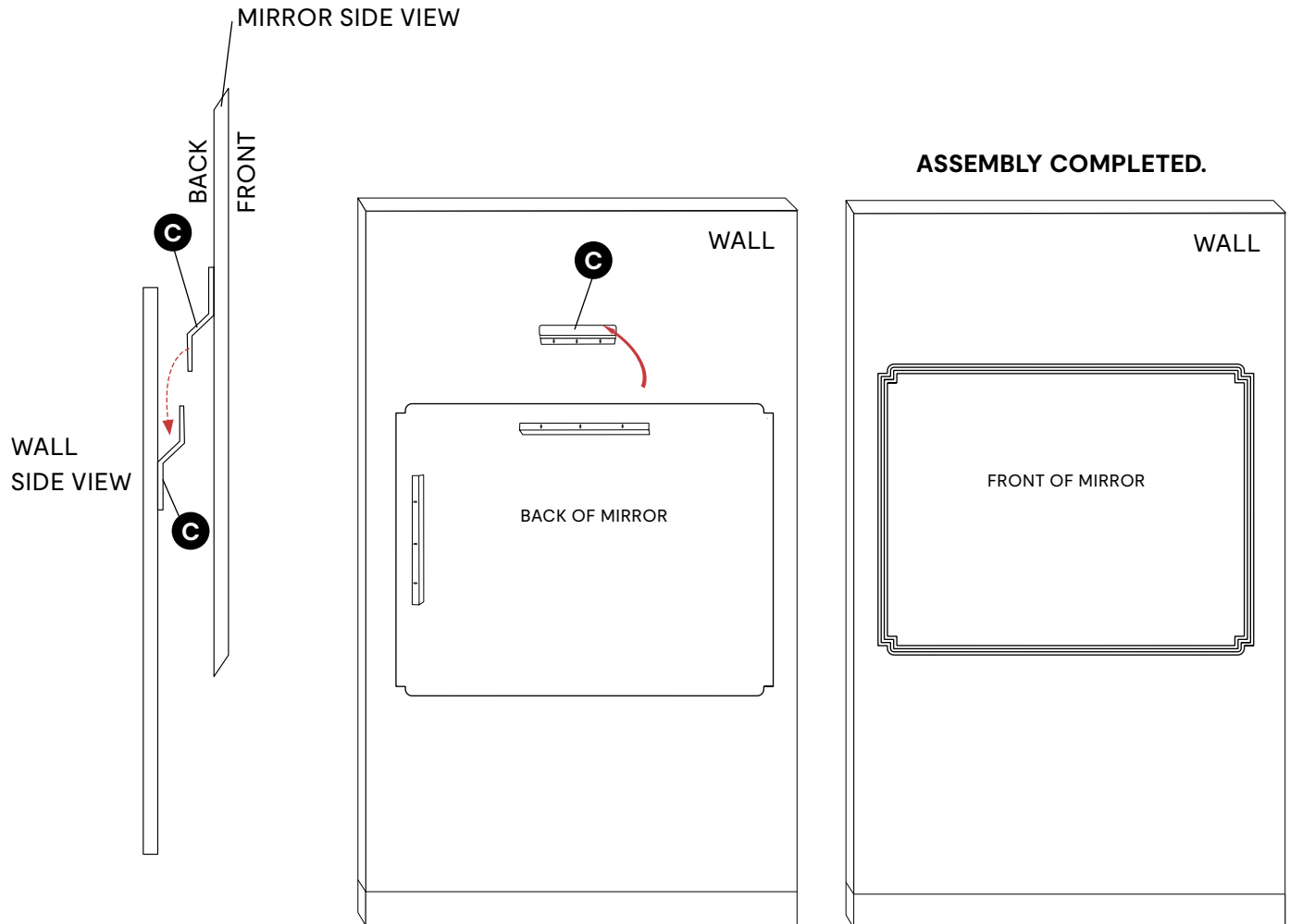


# JOON LOLOI

---

## STEP 3

With help, hang the **MIRROR (1)** onto the **CLEAT (C)** that is attached to the wall, via the **CLEAT (C)** already attached to the **MIRROR (1)** to complete assembly.



## CARE INSTRUCTIONS

Avoid direct exposure to sunlight. Do not place over heat or air conditioning vents. Wipe ideally with a soft cotton cloth. Do not use harsh chemicals. Before cleaning any part, test a small spot in a hidden area. You may need to re-tighten all screws after initial use.